

BENTLEY® PUBLISHER™



Automatic publishing of engineering information over the Web

Bentley® Publisher™ is a server product that enables you to automatically publish, on demand and over the Internet, the most up-to-date version of documents, including DGN, DWG and Digital InterPlot™ files, MicroStation GeoGraphics® projects and images in popular raster formats.

Bentley Publisher provides effective collaboration tools that enhance the communication of engineering information throughout a geographically dispersed organization. Project managers and decision-makers can dynamically view the current state of a project locally and remotely.

Publish and View Engineering Drawings

Without requiring any changes to your existing workflow, Bentley Publisher provides project members that need to work with projects spanning multiple files and formats with instant and universal access to valuable data. All project members, including those with no access to or experience using engineering applications, can easily view published drawings using any standard Web browser. With Bentley Publisher, the reach of your AEC content is extended to all members of your project team, without the need for additional training or software.

Access Geospatial Information

Instantly publish MicroStation GeoGraphics projects, providing universal access to valuable geospatial data. Go beyond simple viewing of data and leverage valuable project information by formulating queries and performing geolocate functions within mapping projects. Information such as lot size, location, zoning, surface area and associated demographics can be quickly and easily accessed, queried and filtered by extended team members and used to make more informed business decisions.

Navigate Through Large Raster Images Quickly and Easily

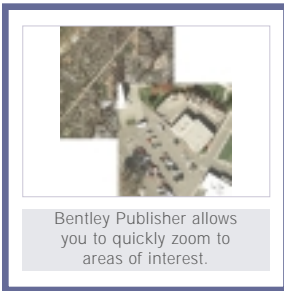
Bentley Publisher's state-of-the-art imaging engine gives it the power to serve huge images, such as orthophotographs, to clients over low-bandwidth connections, without compromising access and navigation speed.

View, Redline and Compare Digital Plots

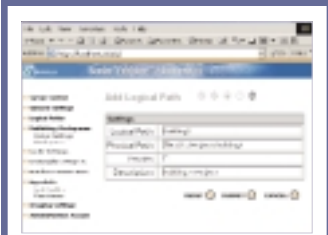
Adding Digital InterPlot to Bentley Publisher in your server configuration allows you to view, redline and compare digital plots to a dynamically created rendition of the current state of a DGN or DWG file. This ensures that, at any stage of the design process, you have an accurate representation and comparison point of project status at any point in time.

Universal Client Viewer Licensing

Bentley Publisher users are licensed to view published information by Bentley Universal Client Licenses. These same licenses will also provide access to engineering content stored in ProjectWise and digital renditions stored in Digital InterPlot. This flexibility allows you to add individual Universal Client Licenses as your needs grow.



BENTLEY PUBLISHER AT-A-GLANCE



Bentley Publisher has a simple administrator interface for ease of server monitoring and configuration.

Enhanced Viewing, Printing and Redlining

- View control (zoom, pan, window area, magnify)
- Measurements
- Level control
- Reference file control
- Saved view selection
- Scaled plotting
- Ability to attach redlines as RDL or RED files in MicroStation® or AutoCAD®
- Consistent viewing by publishing information within the same workspace or project used to create them

Dynamic Hyperlink Creation

- Hyperlinks to graphic elements or text within a project or design
- Access to project information from the enterprise database
- Automatically generated hyperlinks to graphic elements or published HTML lists of database records

Simple Administration

- Easy deployment
- Local and remote access with Web-enabled user interface management of server status and configuration
- Automatic Web configuration

Digital InterPlot Integration

- Ability to dynamically publish Digital InterPlot plan sheets/sets from IPARM and IPS files
- Dynamic plot publishing
- Redline plot storage in Digital InterPlot repository
- Digital InterPlot redlines import into MicroStation, overlaying the original design data

Client-based Printing

- High-quality prints of any size
- Scale control
- Windows printer support

File format support

- MicroStation DGN files with raster attachments
- MicroStation CEL files
- AutoCAD DWG and DXF files (AutoCAD 2000/2000i/2002 files)
- MicroStation GeoGraphics projects, including DGN and raster maps
- Digital InterPlot DPR files

- BMP 1, 4, 8, 24 Bits, Lined: Uncompressed, RLE4 or RLE8
- C29 (Type 29) 8 Bit, Lined or Tiled, Multi-resolution possible; RLE compression
- CALS 1 Bit, Lined; CCITT Group 4 Compression
- CIT (Type 24) 1 Bit, Lined, Multi-resolution possible; CCITT Group 4
- COT (Type 2) 8 Bit, Lined or Tiled, Multi-resolution possible; Uncompressed
- ECW (ERMapper images)
- FPX 8, 24, 32 Bit, Tiled, multi-resolution; JPEG and Single Color
- GeoTiff 1, 8, 24 Bit, Matrix, ModelTiePoints, ModelPixelScale tags, Lined, Stripped or Tiled, Multi-resolution possible; Deflate, CCITT Group 3, CCITT Group 4, Packbits and JPEG
- HMR 1, 8 Bit, Tiled, Multi-resolution; CCITT Group3, CCITT Group4, Packbits and Deflate
- Image Manager™ Projects 1, 8, 24, 32
- ImageMapped 4, 8 Bit, Lined; Uncompressed
- Image RGB 24 Bit, Lined; Uncompressed
- iTIFF 1, 8, 24 Bit, Stripped or Tiled Multi-resolution; Deflate, CCITT Group3, CCITT Group4, Packbits, RLE and JPEG
- JFIF/JPEG 24 Bit, Lined; JPEG Compression
- PCX 1, 4, 8, 24 Bit, Lined; Uncompressed
- PNG 1, 8, 24, 32 Bit, Lined; Deflate
- PSS 1, 8, 24, 32 Bit
- Raster Manager™ Projects 1, 8, 24, 32 Bit
- RGB (Type 28) 24 Bit, Line or tiled; Uncompressed
- RLC 1 Bit, Lined
- RLE (Type 9) 1 Bit, Lined or Tiled, Multi-resolution possible; RLE Compression
- SID (MrSID images)
- Sun Raster 4, 8 Bit, Lined; Uncompressed
- Targa 24 Bit, Lined; Uncompressed
- TG4 (Type 24) 1 Bit, Tiled, Multi-resolution possible; RLE Compression
- TIFF 1, 8, 24 Bit, Lined, Stripped or Tiled, Multi-resolution possible; Deflate, CCITT Group 3, CCITT Group 4, Packbits and JPEG

BENTLEY PUBLISHER SYSTEM REQUIREMENTS

- Processor: Intel® Pentium®-based or AMD Athlon™-based PC or workstation
- Operating System: Microsoft® Windows NT® 4 Server (SP6 recommended), Windows® 2000 Server
- Memory: 256MB RAM
- Disk Space: 1GB minimum free disk space for software, sample files and file caching
- Input Device: Windows pointing device

CALL TODAY FOR MORE INFORMATION

Bentley Systems, Incorporated, is a global provider of collaborative software solutions that enable our users to create, manage and publish architectural, engineering and construction (AEC) content. As a part of those solutions, Bentley provides professional services including implementation, integration, customization and training.

Visit us on the Web for more information about Bentley solutions and services. www.bentley.com

Bentley North American Headquarters
Bentley Systems, Incorporated
685 Stockton Drive
Exton, PA 19341 USA
Phone: +1 800 BENTLEY (+1 800 236 8539)
Outside the US +1 610 458 5000
Fax: +1 610 458 1060

Bentley International Headquarters
Bentley Systems Europe B.V.
Wegalaan 2
2132 JC Hoofddorp
THE NETHERLANDS
Phone: +31 23 556 0560
Fax: +31 23 556 0560

To find a local Bentley office, please visit www.bentley.com/corporate/contacts.

