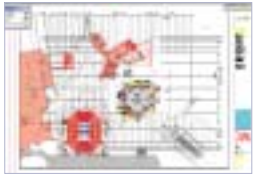


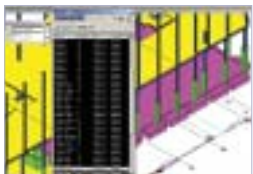
BENTLEY® VIEW™

The v8 Generation

The complete viewing and printing solution for DGN and DWG content



Bentley View integrates seamlessly into your current workflow.



Run basic manipulating commands against all data.



Bentley View supports reference attachments, consolidated level management and individual views.

Bentley® View™ is a powerful viewing and printing application that extends the reach of your design, engineering, spatial, and other AEC content. Bentley View provides a high performance and immutable viewing environment, regardless of format—DGN, DWG, raster, or hybrid.

With integrated support for Design History, Digital Rights, and Digital Signatures, Bentley View enables you to securely distribute project or operational content to those who need it, and avoid unattended or unauthorized access. Bentley View brings the discipline of paper distribution back into the digital age.

Intuitive Viewing Tools

Bentley View enhances collaboration with extended team members by providing access to detailed AEC content in a secure environment. Reference files, levels and design history, along with metadata reporting and basic measurement functionality, can be leveraged and help team members make well-informed business decisions.

Printing

Project team members can use Bentley View to print all drawings, models, or maps to any standard Windows printing device.

Data Interoperability

Native support for DGN and DWG and a variety of raster files ensures that you see all aspects of the content, regardless of the format.

Change Management

Bentley View enables you to review maps, models, and drawings through the design, construction and operational phases of a project. To support such mission-critical distribution of information, Bentley View incorporates support for Design History, Digital Signatures, and Digital Rights. Design History allows you to track each stage of your work, similar to keeping paper copies but liberated through the flexibility of digital storage. Digital Rights enables you to define and determine who is permitted to access the content and Digital Signatures allows you to authenticate the integrity of the content.

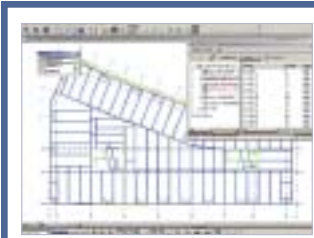
Workspace Support

Bentley View integrates seamlessly with your current organizational workflow. Easy-to-use configuration options let you leverage your current workspace settings.

BENTLEY VIEW AT-A-GLANCE



Bentley View consolidates viewing solutions by offering a single unified viewer for all DGNs and DWGs in their native formats.



Levels, display, security and management all come standard with Bentley View.

Viewing Tools

- PowerSelector
 - Creation of simple or complex selection sets
 - Ability to add to or remove objects from selection sets
- AccuDraw® and AccuSnap™ Navigation Tools
 - Dynamic control of drawing planes and coordinate systems
 - Automatic identification of geometric keypoints
 - Applicable in both 2D and 3D environments
- Snap mode support
- Distance, radius, angles, area and volume measurements
- Tag review reporting of element, cell or block metadata

DWG Support

- Ability to natively read and print DWG files, from AutoCAD R2.6 to R2002
- SHX font support

Reference Files

- Unlimited number of reference files
- Compatible with DGN and DWG data
- Integrated with design history
- Self-reference support
- Nested reference support

Design History

- Ability to review the complete history of a DGN file
- History as an integrated component of a DGN file
- Ability to track changes made within references

Digital Signatures

- Industry-standard encryption techniques
- Graphical and non-graphical signature representations
- Support for signed DGN and references, including DWG references
- Multiple and hierarchical signature configuration recognition

Digital Rights

- Secure permissions support for viewing or printing
- Fully integrated with digital signature technology
- Support for privilege expiration and file password protection

Raster Manager™

- Multiple raster image support (aerial photographs, satellite imagery, scanned maps and drawings, among others)
- Multiple image display within one design file
- PostScript and HPGL2/RTL printing device support
- Industry-standard, 1-28 bit image format support (TIFF, GeoTIFF, JPEG, PNG, TIFF, MrSID, ECW among others)

Annotation and Dimension Styles

- Support for all MicroStation® V8 text and dimension styles

Level Manager

- Levels (on/off) controlled within the source DGN file

Visualization and Volume Clipping

- Wire frame to smooth shading
- Multiple volume clipping and shading in all models

Printing and Plotting

- Printing through standard Windows devices
- Pen table (DGN and DWG) support

Extensibility

- Customizable user interface
- User and project workspace support

BENTLEY VIEW SYSTEM REQUIREMENTS

- Processor:
Intel® Pentium®-based or AMD Athlon™-based PC or workstation
- Operating System:
Microsoft Windows NT® 4 (SP6 recommended), Windows® 2000 or Windows 98 Edition 2
- Memory:
128MB RAM
- Disk Space:
200MB minimum free disk space
- Input Device:
Mouse or digitizing tablet (digitizing tablet requires vendor-supplied WINTAB driver)

CALL TODAY FOR MORE INFORMATION

Bentley Systems, Incorporated, is a global provider of collaborative software solutions that enable our users to create, manage and publish architectural, engineering and construction (AEC) content. As a part of those solutions, Bentley provides professional services including implementation, integration, customization and training.

Visit us on the Web for more information about Bentley solutions and services. www.bentley.com

Bentley North American Headquarters
Bentley Systems, Incorporated
685 Stockton Drive
Exton, PA 19341 USA
Phone: +1 800 BENTLEY (+1 800 236 8539)
Outside the US +1 610 458 5000
Fax: +1 610 458 1060

Bentley International Headquarters
Bentley Systems Europe B.V.
Wegalaan 2
2132 JC Hoofddorp
THE NETHERLANDS
Phone: +31 23 556 0560
Fax: +31 23 556 0565

To find a local Bentley office, please visit www.bentley.com/corporate/contacts.

